



ej

# Drainage Solutions Airports and Ports

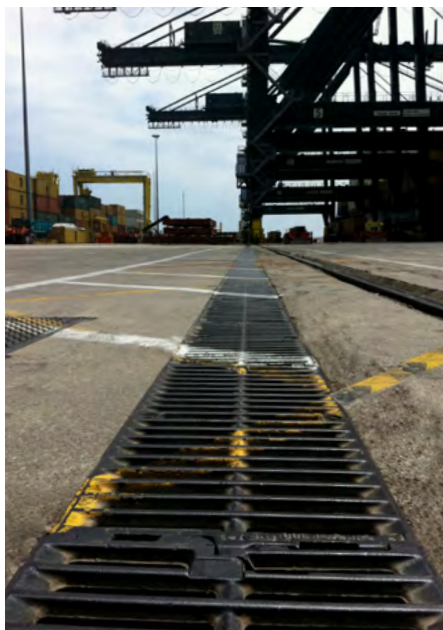


# Airports and Ports Drainage Solutions F900 Extra heavy duty



- **Linear duct and stand alone grating**
- **Large catch flow efficiency**
- **High wheel load resistance**
- **Secured access**
- **Third party certification**

# They trust EJ: 135 years of expertise



Port of Valencia, Spain



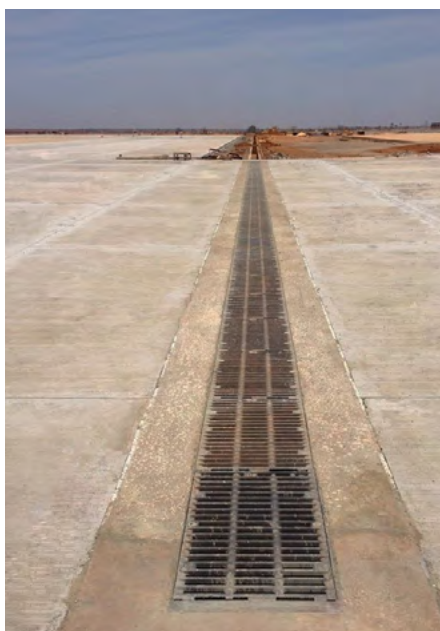
Port of Haifa, Israel



Port of Bilbao, Spain



Venice Airport, Italy



Dakar Airport, Senegal



Cali Airport, Colombia

# Linear duct gratings F900 Extra heavy duty

## Specifications

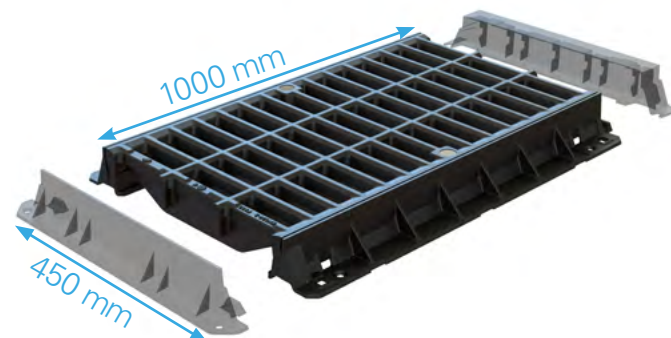
### CA05110 FVL + END BARS

c/o 500 x 1000 mm



### CA1055 FVL + END BARS

c/o 1000 x 450 mm



- Spheroidal graphite cast iron grating and frame according to ISO 1083 Grade 500-7 and EN1563
- Class F900 according to standard EN124: 2015
- NF certified by third party AFNOR
- Coating is black water-soluble paint, non-toxic, non-flammable and non-polluting
- Frame bars incorporate :
  - spigot feature for additional ease of installation
  - 2 holes Ø14 mm to dowel if necessary
  - room for levelling screw kit to avoid shimming
- Grating bolted down to frame bars by means of 2 HM12x60 zinc coated steel screws + lock washers
- Plugs provided for holes
- Innovative bar design to provide maximum water drainage\*
- Pair of end bars



Levelling screw kit

product reference	item code	overall size length x width (mm)	clear opening (mm)	frame height (mm)	Frame bar support width (mm)	waterway cm <sup>2</sup>	catch flow efficiency L/s 50mm water height longi slope < 2%
<b>CA1040 FVL</b>	532105	1000 x 574	1000 x 300	100	135	1810	120
<b>CA1055 FVL</b>	528251	1000 x 730	1000 x 450	100	135	2012	157
<b>CA1070 FVL</b>	522289	1000 x 880	1000 x 600	100	135	2434	160
<b>CA1085 FVL</b>	538074	1000 x 1028	1000 x 750	100	135	3024	200
<b>CA05110 FVL</b>	546070	528 x 1270	500 x 1000	100	135	2321	153
<b>CA0570 FVL</b>	542401	500 x 880	500 x 600	100	135	1066	71

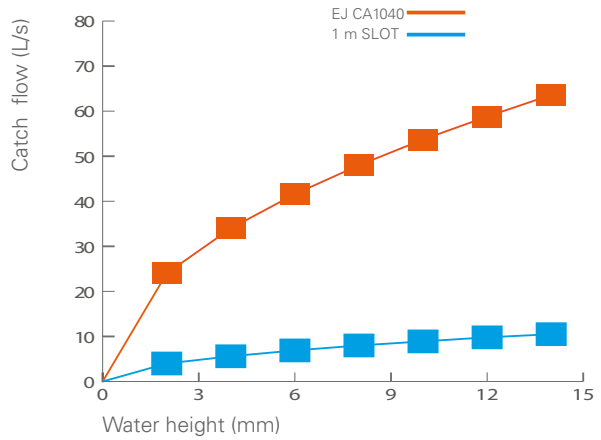
\*except for CA05110

# Linear duct gratings F900 Extra heavy duty

## Performances



The smooth ribs design avoids water turbulence and splashing to maximise the catch flow efficiency\*

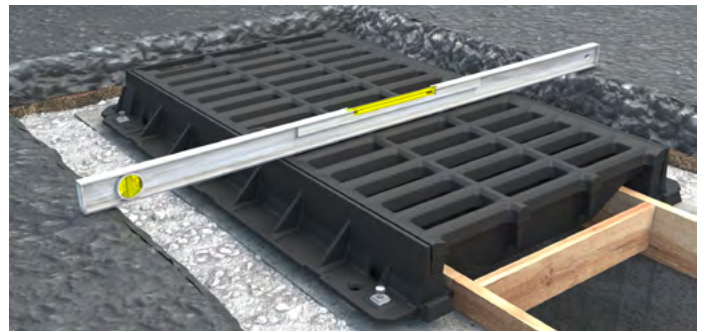


With a height of 12 mm water, the CA1040FVL by EJ drains 6 times more water than the traditional slot drainage system and guarantees more safety in the event of heavy rainfall

## Easy installation



- Prepare rebate and install shuttering.
- Cast quick setting concrete pad to support frame junctions



- Install front bar with brackets and position the first 1 meter unit, joining frame bars
- Check level and alignment



- Follow on with the next unit and connect them to the previous one, interlocking the grating thanks to the spigots
- Install rear bar
- Pack under frame with concrete and backfill rebate



- Ensure the locking screws are closed with a minimum torque of 8 m.kg and open to traffic

# Stand alone drainage gratings F900 Extra heavy duty

## Specifications

### SOLO SFGC - CIRCULAR GRATING AND SQUARE FRAME



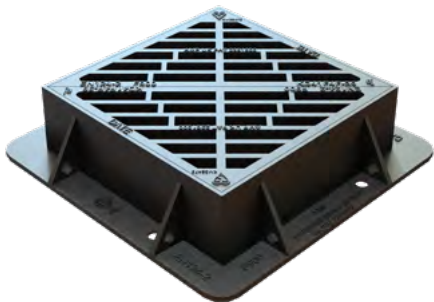
- Spheroidal graphite cast iron according to
- ISO 1083 (type 500-7) and EN1563
- Class F900 according to standard EN124: 2015
- NF certified by third party AFNOR
- Black coating water-soluble paint, non-toxic, non-flammable and non-polluting
- Wide flat chloroprene rubber cushioning insert fixed on the grating
- Security blocking at 90° preventing accidental closure
- Square frame monoblock as cast with Ø 20mm holes to dowel if necessary
- Grating can be removed from the 90° angle

### SOLO SFGR - CIRCULAR GRATING AND CIRCULAR FRAME



- Spheroidal graphite cast iron according to ISO 1083 (type 500-7) and EN1563
- Class F900 according to standard EN124: 2015
- Black coating water-soluble paint, non-toxic, non-flammable and non-polluting
- NF certified by third party AFNOR
- Wide flat chloroprene rubber cushioning insert fixed on the grating
- Security blocking at 90° preventing accidental closure
- Circular frame monoblock as cast with Ø 20mm holes to dowel if necessary
- Grating can be removed from the 90° angle

### KD41F 4F - DOUBLE TRIANGULAR GRATING AND SQUARE FRAME

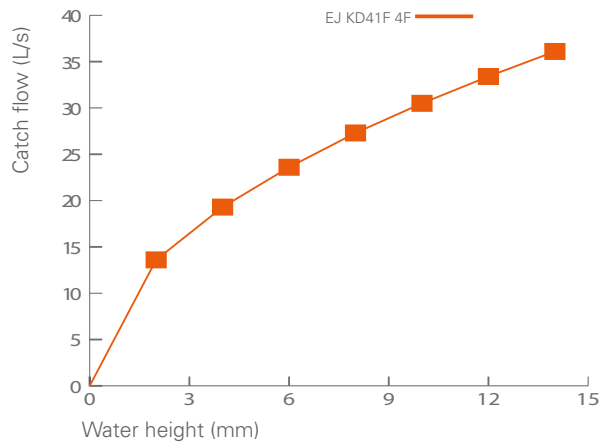


- Ductile iron to ISO 1083
- Manufactured to BS EN124 class F900, 90 tonnes safe test load
- Comply with HA 104 and conform to BS7903
- Black coated finish to BS 3416
- KM certified by BSI Kitemark
- Non rock double triangular design for stability and silence

product reference	item code	overall size length x width (mm)	clear opening (mm)	frame height (mm)	waterway cm2	catch flow efficiency L/s 50mm water height longi slope < 2%
<b>SOLO SFGC</b>	528457	850 x 850	600 ø	100	1020	67
<b>SOLO SFGR</b>	528456	850 ø	600 ø	100	1020	67
<b>KD41F 4F</b>	KD41F 4F	610 x 610	450 x 450	150	1028	68

# Stand alone drainage gratings F900 Extra heavy duty

## Performances



With a height of 12 mm water and a <2% longitudinal slope the KD41F 4F by EJ drains 33 L/s

## Easy installation



- Prepare rebate



- Lower frame in the rebate
- Check level



- Install shuttering and check level
- Fill the rebate up to the finished surface level (-20mm in case of asphalt finish)



- Remove shuttering
- Insert grating and open to traffic



ej

ejco.com



Americas

+1 800 874 4100

EMEA

Europe, Middle East,  
Africa and South East Asia

+33 344 08 28 00

Asia-Pacific

+61 73216 5000

EMEA

ZI de Marivaux  
60149 Saint Crépin Ibovillers  
France  
+ 33 (0) 3 44 08 28 47  
emea.airportport@ejco.com

Registered  
Trademarks



CAVANAGH®  
NORINCO®  
TELECOM®  
SELFLEVEL®  
ERMATIC®  
CHILDSAFETY®

DEFENSO®  
NORGUSS®  
CABLECOM®  
NORLONG®  
MAXIMO®  
AQUERA®

**DRAINAGE RANGES**  
**Airports and Ports**  
**EJ© - 01/2019**